

3rds and Arpeggios

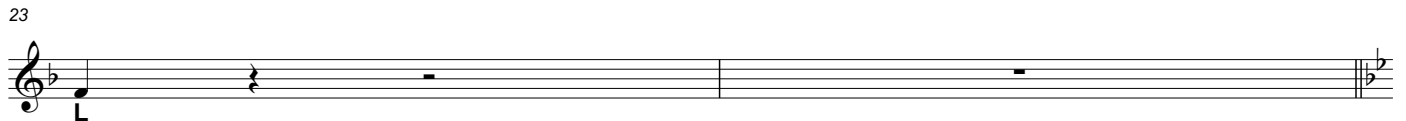
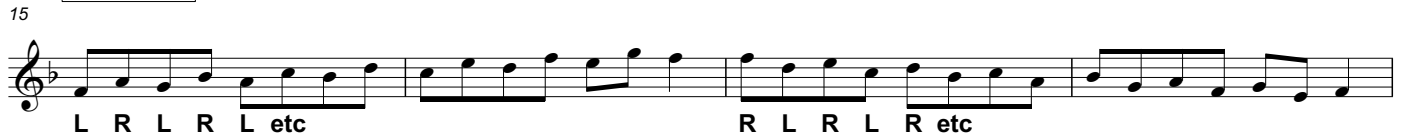
4



C-Major



F-Major



Bb-Major



Eb-Major

35

Musical staff for Eb-Major, measures 35-38. The staff contains a sequence of eighth notes. The first four measures are labeled with fingerings: L R L R L etc, followed by R L R L R etc.

39

Musical staff for Eb-Major, measures 39-42. The staff contains a sequence of eighth notes. The first measure is labeled L R L R L etc, the second and third measures are L R L R, and the fourth measure is R L R L etc. The staff ends with a double bar line and a fermata over the final note.

43

Musical staff for Eb-Major, measures 43-44. The staff contains a sequence of eighth notes. The first measure is labeled L. The staff ends with a double bar line and a fermata over the final note.

Ab-Major

45

Musical staff for Ab-Major, measures 45-48. The staff contains a sequence of eighth notes. The first four measures are labeled with fingerings: L R L R L etc, followed by R L R L R etc.

49

Musical staff for Ab-Major, measures 49-52. The staff contains a sequence of eighth notes. The first measure is labeled L R L R L etc, the second and third measures are L R L R, and the fourth measure is R L R L etc. The staff ends with a double bar line and a fermata over the final note.

53

Musical staff for Ab-Major, measures 53-54. The staff contains a sequence of eighth notes. The first measure is labeled L. The staff ends with a double bar line and a fermata over the final note.

Db-Major

55

Musical staff for Db-Major, measures 55-58. The staff contains a sequence of eighth notes. The first four measures are labeled with fingerings: L R L R L etc, followed by R L R L R etc.

59

Musical staff for Db-Major, measures 59-62. The staff contains a sequence of eighth notes. The first measure is labeled L R L R L etc, the second and third measures are L R L R, and the fourth measure is R L R L etc. The staff ends with a double bar line and a fermata over the final note.

63

Musical staff for Db-Major, measures 63-64. The staff contains a sequence of eighth notes. The first measure is labeled L. The staff ends with a double bar line and a fermata over the final note.

G-Major

65

L R L R L etc R L R L R etc

69

L R L R L etc L R L R R L R L etc L

73

L

D-Major

75

L R L R L etc R L R L R etc

79

L R L R L etc L R L R R L R L etc L

83

L

A-Major

85

L R L R L etc R L R L R etc

89

L R L R L etc L R L R R L R L etc L

93

L

